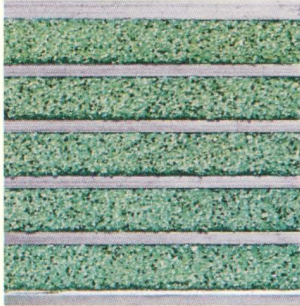


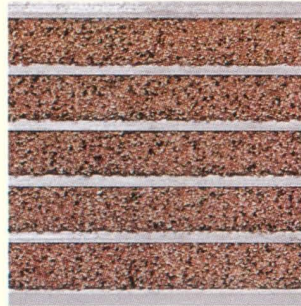
# SUPER-GRIT

Actual tread color may vary slightly from printed sheet.  
Request actual tread sample if color is critical.

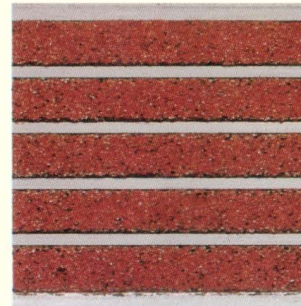
# SAFETY NOSINGS COLOR CHART



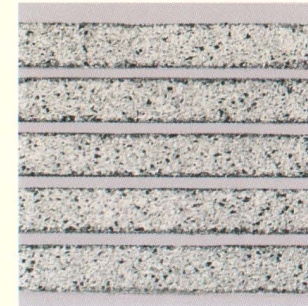
LIGHT GREEN  
LG-1



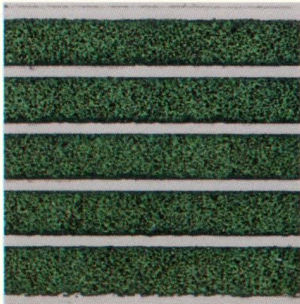
LIGHT BROWN  
LB-1



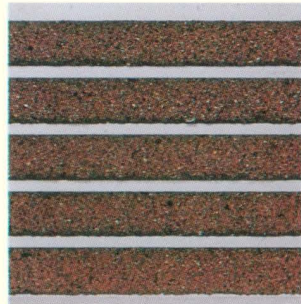
LIGHT RED  
LR-1



CONCRETE GRAY  
CG-1



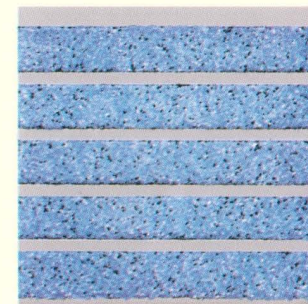
DARK GREEN  
DG-1



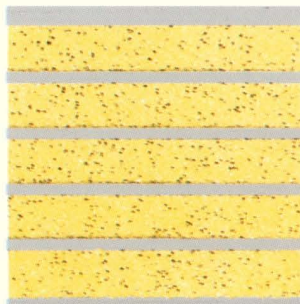
DARK BROWN  
DB-1



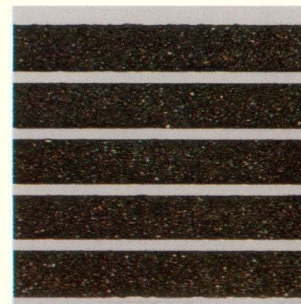
DARK RED  
DR-1



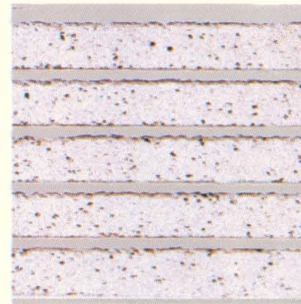
BLUE  
BL-1



SAFETY YELLOW  
SY-1



BLACK  
BLA-1



WHITE  
W-1



**WOOSTER PRODUCTS INC.**

1000 Spruce Street • P.O. Box 6005 • Wooster, Ohio 44691

Phone 330-264-2844 • Fax 330-262-4151

Toll Free Phone: 1-800-321-4936

Web-Site: <http://www.wooster-products.com>

E-Mail: [Sales@wooster-products.com](mailto:Sales@wooster-products.com)

**IMPORTANT NOTICE TO PURCHASER: THE FOLLOWING IS MADE IN LIEU OF ALL WARRANTIES, EXPRESSED OR IMPLIED, INCLUDING WARRANTIES OF MERCHANTABILITY AND FITNESS FOR A PARTICULAR PURPOSE:** Purchase or use of this product constitutes an agreement with Seller and Manufacturer that, if the product proves to be defective or in any way unsuitable, Seller's and Manufacturer's limit of liability for all damages, including but not limited to incidental or consequential damages, and User's or Purchaser's exclusive remedy, regardless of legal theory, including theories of breach of warranty, negligence and strict liability, shall be to receive, at Seller's or Manufacturer's option, repair of the defective product, an equivalent quantity of replacement product or a refund of the purchase price.